



PROJECT GUIDE / HOW TO MEASURE

The best way to start your kitchen design process is to print up this PDF and fill it out as you look through the different cabinets and countertops on the website, marking down which styles you like the most. Then fill out the information regarding your project and contact information. Once your finished please email it to **info@pittsburghkitchencabinets.com** or fax to 412-434-8084 and a designer will contact you to start your free kitchen design.

Desired Start/Finish Project Dates

Start Project: _____

Complete Project: _____

Cabinet Budget

Under \$1,000 \$5,000-\$7,000

\$1,000-\$3,000 \$7,000-10,000

\$3,000-\$5,000 \$10,000+

Contact Information

Client Name: _____

Address: _____

City, State, Zip: _____

Home Phone: _____

Work Phone: _____

Cell Phone: _____

Email: _____

Favorite Door Styles

1. _____

2. _____

3. _____

4. _____

Favorite Countertop Material Name

1. _____

2. _____

3. _____

4. _____

Project Room

Kitchen Bathroom Other

Type of Project

 Remodel New Construction

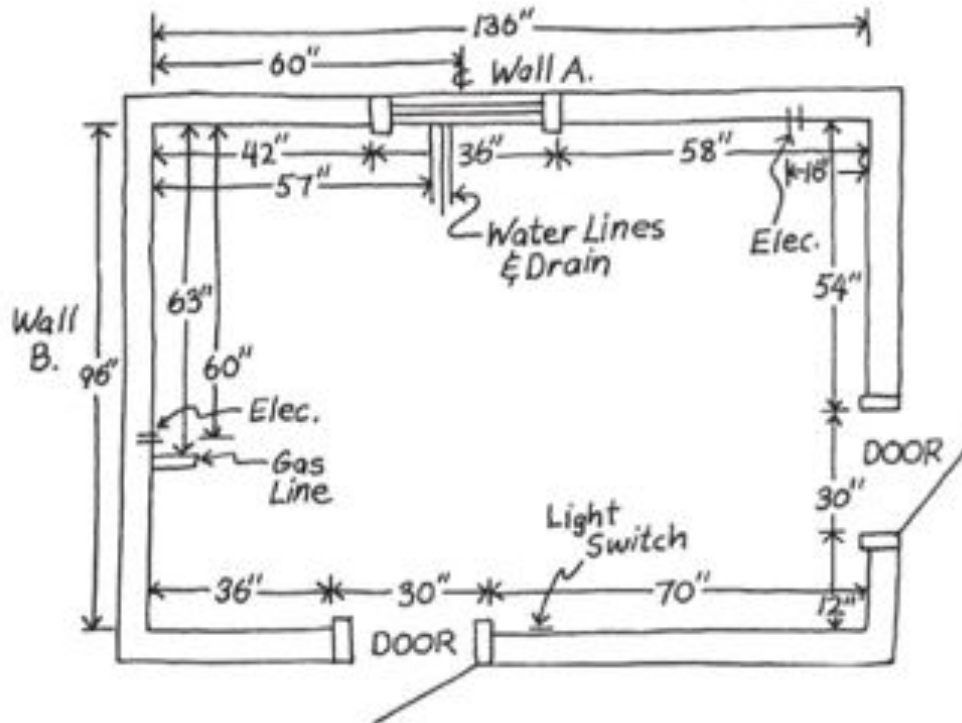


Below is a step-by-step guide for drawing and measuring your kitchen. To make it easier to draw your kitchen we have provided a grid that can be printed and used as grid paper. (See final page of this PDF)

Note: If you are remodeling, do not include current cabinetry or other furniture that will not be kept, such as kitchen tables, in your measurements.

Note: All of your measurements should be in inches. For example, if you measure a wall that is 10 feet, write it as 120" (a quotation mark (") denotes inches).

Sample Draw



Step 1:

Draw a rough outline of your kitchen, like the one above. Please mark the doors and windows and label them.

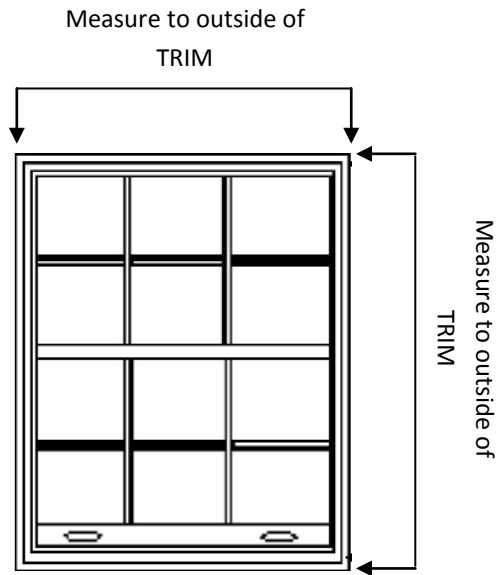
Step 2:

Draw in any obstructions such as radiators, pipes, sink plumbing, etc. that you either can not, or do not, want moved.

Step 3:

1. Beginning at the top left corner of your drawing measure to the first window, door, or wall. Continue clockwise around the room until each wall, window and door has been measured.

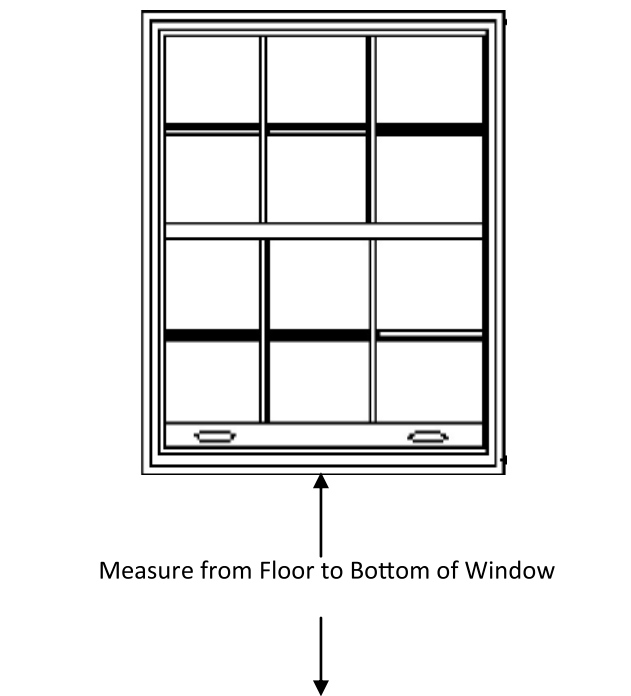
Note: When measuring doors and windows the trim is considered part of the door or window. As shown in the drawing below measure from the outside of the trim on one side to the outside of the trim on the other side (or are at least very close). For example, in our sample drawing, you would take the overall measurements of the top wall and add them together. Then do the same with the bottom wall. Once you have added each walls measurements check the totals to see if they match.



2. Measure the ceiling height and write it in the center of your drawing. Sometimes, especially with older homes, it is a good idea

to take measurements in a few different areas of the kitchen. Ceiling heights, even in the same room, can sometimes vary by as much as a few inches.

3. As shown in the drawing below, measure from the floor to the bottom of each window and also measure the overall window height. If you have printed these instructions, write the measurements in the table provided below.



BUDGET

KITCHEN & BATH

Call 877-413-1359
To schedule your free estimate

Distance from floor to bottom of window

Height of window to floor include trim

Window 1	inches	inches
Window 2	inches	inches
Window 3	inches	inches
Window 4	inches	inches
Window 5	inches	inches

Step 4:

1. Beginning at the top left of your drawing, label the windows "Window 1", "Window 2", etc. in a clockwise order.
2. Again, beginning at the top left of your drawing, label the doors "Door 1", "Door 2", etc. in a clockwise order.
3. Next to each wall, write the name of the adjacent room. If the wall is an "outside wall" write "exterior wall."

Step 5:

1. Measure any obstructions such as radiators, pipes, etc. that you either can not, or do not, want moved. If the obstruction is close to a wall, measure out from the wall to the edge of the obstruction.
2. Measure from the second closest wall to the edge of the obstruction.
3. If the obstruction does not span the full height of the room, measure the height of the obstruction.

Check your measurements. If your room is rectangular add up the measurements of the parallel walls and make sure they match (or are at least very close). For example, in our sample drawing, you would take the overall measurements of the top wall and add them together. Then do the same with the bottom wall. Once you have added each walls measurements check the totals to see if they match.

After you have completed your kitchen layout drawing, bring it into our showroom or email it over. Here the drawing will be discussed and any possible changes can be made. A 3 rendering will be presented to you of your dream kitchen.

